

# FAQS FOR LOCAL SAA CHAPTERS

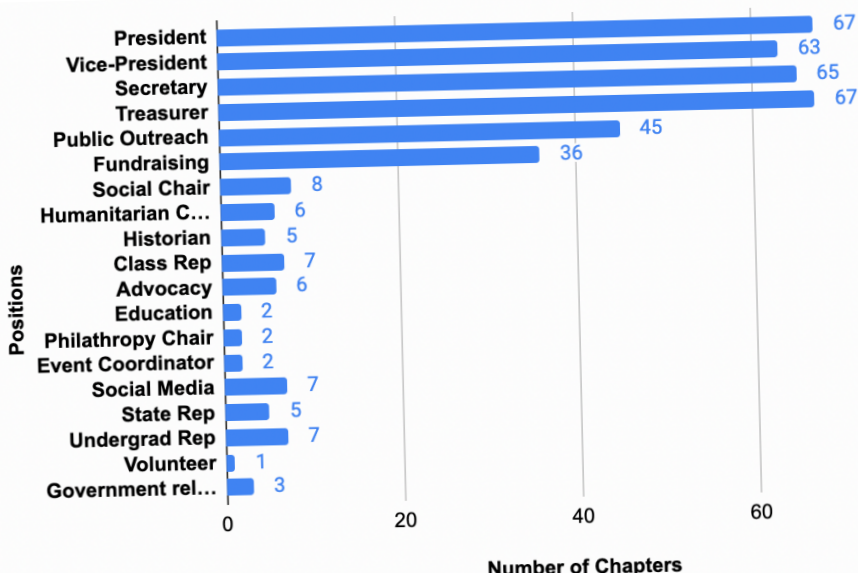
Information from 2020 the Chapter Needs Assessment Distributed to 79 SAA chapters. 67 responses were collected from September 2-October 9, 2020.

## WHAT LEADERSHIP POSITIONS DO OTHER CHAPTERS HAVE?

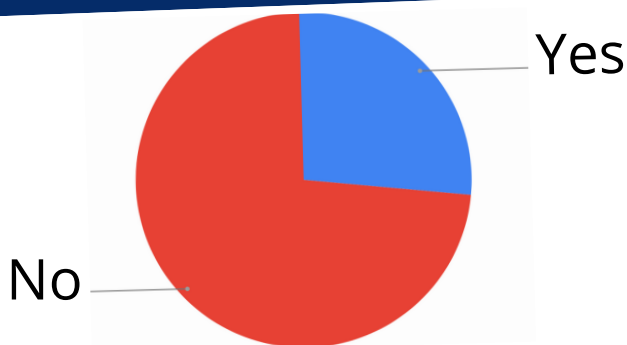
Every respondent's chapter had a **President** and **Treasurer**.

Most chapters also had positions including **Secretary, Vice President, Public Outreach, and Fundraising.**

Other positions included Social, Humanitarian, Historian, Class Representative, Advocacy, Education, Philanthropy, Event Coordinator, Social Media, State Representative, Undergraduate Representative, Volunteer, and Government Relations.



## ARE CHAPTER MEMBERS REQUIRED TO JOIN THE NATIONAL SAA?



**73%** (49 of 67) of the respondents did not require their members to join the national SAA. **27%** (18 of 67) did require their members to join the national SAA.

## HOW DO OTHER CHAPTERS INTERACT?



- **42%** (28 of 67) of respondents interacted with other chapters on regional calls
  - **37%** (25 of 67) interacted via email
  - **34%** (23 of 67) had no interaction
  - **10%** (7 of 67) had in-person interaction
- Respondents could choose more than one response.

## HOW MUCH DO OTHER CHAPTERS CHARGE FOR DUES?

The average dues charged per year were **\$17.75**. The range was \$0 to \$60.

## HOW DO UNDERGRADUATES PARTICIPATE IN CHAPTERS?

- **24%** (16 of 67) of the respondents' undergraduate members participated **similarly to graduate members** but were **unable to serve in leadership positions.**
- **22%** (15 of 67) participated in **community outreach** events, and another **22%** (15 of 67) participated in **fundraising events.**
- **16%** (11 of 67) participated **no differently** than graduate members.
- **9%** (6 of 67) participated **similarly to graduate members** but were **unable to vote in chapter decisions.**

## HOW DO OTHER CHAPTERS ENCOURAGE THEIR MEMBERS TO PARTICIPATE?

- **73%** (49 of 67) of the respondents encouraged their members to participate with social engagement elements.
  - **58%** (39 of 67) surveyed members
  - **46%** (31 of 67) used a point system
  - **21%** (14 of 67) had financial incentives
  - **6%** (4 of 67) had no way of encouraging members to participate
- Respondents could choose more than one response.

## WHAT EVENTS DO OTHER CHAPTERS PARTICIPATE IN?

The most popular national SAA events the chapters participated in were the **Ask Me About Audiology Campaign**, **SAA Chapter Challenge**, and **SAA Humanitarian Month/World Hearing Day**.

